



VISUAL-SPATIAL

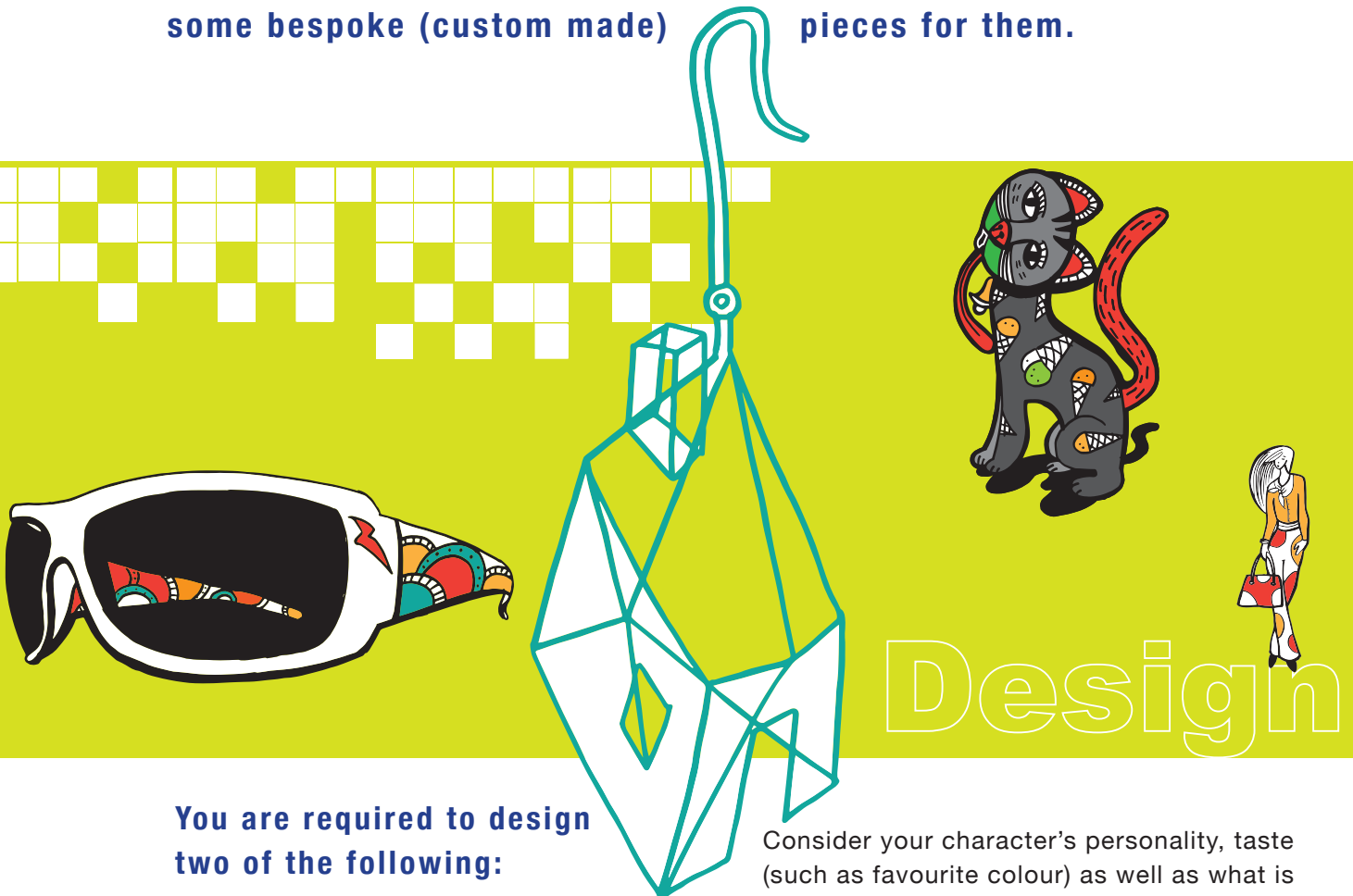


The Red Hat
related to feelings
and intuition



DESIGNERS WANTED

THE TASK: Your design expertise is required. One of the characters from a book you have read is seeking your assistance to design some bespoke (custom made) pieces for them.



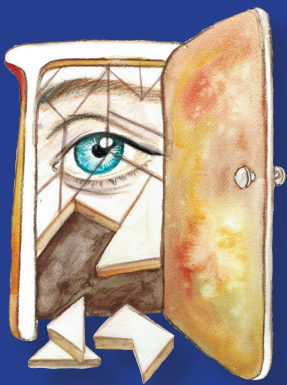
You are required to design two of the following:

- **A piece of jewellery**
- **An accessory**
- **A set of clothing**
- **A sculpture or piece of art**

Consider your character's personality, taste (such as favourite colour) as well as what is special to them and inspires them. Use this (as well as other relevant information about the character) to design your pieces. For each creation, include a written piece explaining the title of the piece, your choices behind the design and what the creation reflects about the character.

As part of the design process, you are required to complete the 'Bespoke Design Questionnaire' (this questionnaire is included in the next section of this activity) as well as an inspiration page for each piece (details about how to complete the inspiration pages can be found after the Bespoke Design Questionnaire). The inspiration pages could be written and hand drawn, or completed using apps and/or an online web based program.

Ideas about presenting this task are included at the end of this activity.



VISUAL-SPATIAL



The Red Hat
related to feelings
and intuition



DESIGNERS WANTED

In your book or on your tablet please reproduce the Bespoke Design Questionnaire and complete it. Let your inner designer shine and get creative with this!

BESPOKE DESIGN QUESTIONNAIRE

CHARACTER'S NAME:

AGE:

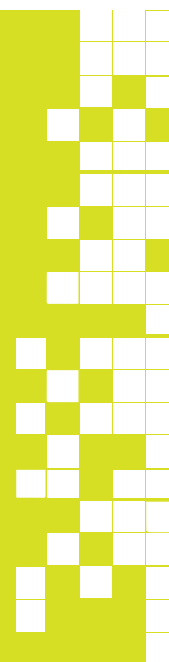
PLACE OF RESIDENCE:

**USE FIVE WORDS TO DESCRIBE
THIS CHARACTER'S PERSONALITY:**

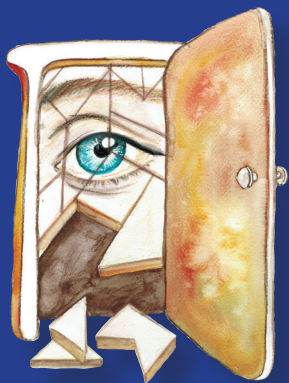
WHAT INSPIRES THIS CHARACTER?

CHARACTER'S INTERESTS:

CHARACTER'S STYLE:



Design



VISUAL-SPATIAL



The Red Hat
related to feelings
and intuition



DESIGNERS WANTED

INSPIRATION PAGE FOR DESIGNING A JEWELLERY PIECE.

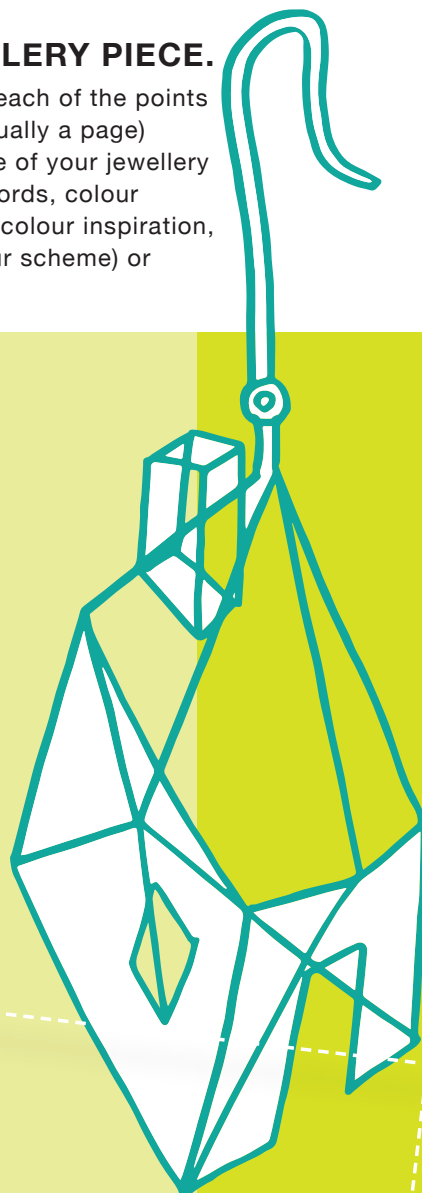
Create a jewellery design inspiration page whereby you address each of the points below. The purpose of an inspiration page is to have a space (usually a page) where you collect your inspiration for the design, colour and style of your jewellery piece. An inspiration page contains images, photos, materials, words, colour inspiration (it might be photos of foods or flowers as a source of colour inspiration, or scenes such as a beach scene to capture perhaps a teal colour scheme) or anything else that inspires the design.

JEWELLERY:

What piece of jewellery are you considering?

- ☐ Necklace
- ☐ Bracelet
- ☐ Bangle
- ☐ Earrings
- ☐ Other _____

- What is your preferred metal?
Gold, silver or bronze. What other materials would you like to include in the design?
- Would you like to include gems, charms or pearls? If so, please detail your choices.
- Additional information, what other requirements and details should be considered when designing a jewellery piece for the character.
- Inspiration images (include any sketches, descriptions, photos, pictures of jewellery pieces that you believe could appeal to the character).





VISUAL-SPATIAL



The Red Hat
related to feelings
and intuition



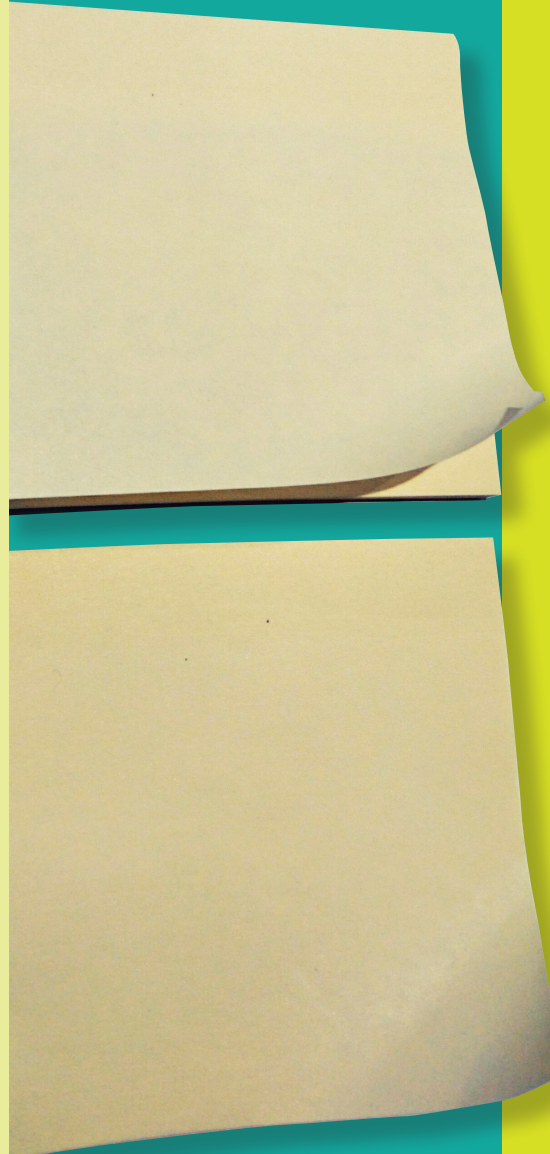
DESIGNERS WANTED

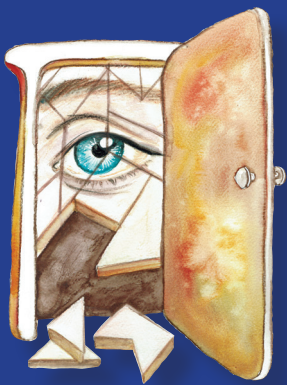
INSPIRATION PAGE FOR DESIGNING AN ACCESSORY.

Create an accessory design inspiration page whereby you address each of the points below. The purpose of an inspiration page is to have a space (usually a page) where you collect your inspiration for the design, colour and style of your accessory. An inspiration page contains images, photos, materials, words, colour inspiration (it might be photos of foods or flowers as a source of colour inspiration, or scenes such as a beach scene to capture perhaps a teal colour scheme) or anything else that inspires the design.

AN ACCESSORY:

- **What accessory are you considering?**
 - ☐ Eyewear
 - ☐ Footwear
 - ☐ Headwear
 - ☐ Hat
 - ☐ Handbag
 - ☐ Tie
 - ☐ Belt
 - ☐ Scarf
 - ☐ Other _____
- **What are your preferred materials to use?**
- **Additional information, what other requirements and details should be considered when designing an accessory for the character.**
- **Inspiration images (include any sketches, descriptions, photos, pictures of accessories that you believe could appeal to the character).**





VISUAL-SPATIAL



The Red Hat
related to feelings
and intuition



DESIGNERS WANTED



INSPIRATION PAGE FOR DESIGNING CLOTHING.

Create a clothing design inspiration page whereby you address each of the points below. The purpose of an inspiration page is to have a space (usually a page) where you collect your inspiration for the design, colour and style of your clothing piece. An inspiration page contains images, photos, materials, words, colour inspiration (it might be photos of foods or flowers as a source of colour inspiration, or scenes such as a beach scene to capture perhaps a teal colour scheme) or anything else that inspires the design.

CLOTHING:

- What piece/s of clothing are you considering?
- What materials will be used in the garment/s? Include fabric swatches (actual or drawn, showing colours, patterns and textures).

- Inspiration images (include any sketches, descriptions, photos, pictures of clothing pieces that you believe could appeal to the character).

- Will there be any embellishments on the clothing? Explain.
- Additional information, what other requirements and details should be considered when designing clothing items for the character.



VISUAL-SPATIAL



The Red Hat
related to feelings
and intuition



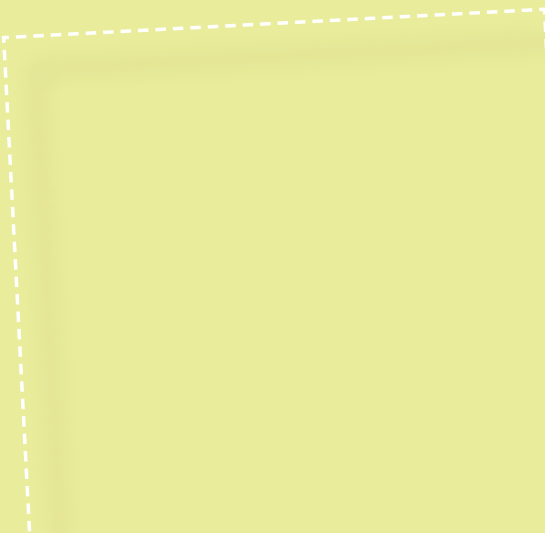
DESIGNERS WANTED

INSPIRATION PAGE FOR DESIGNING A SCULPTURE OR PIECE OF ART.

Create a sculpture or piece of art design inspiration page whereby you address each of the points below. The purpose of an inspiration page is to have a space (usually a page) where you collect your inspiration for the design, colour and style of your sculpture or piece of art. An inspiration page contains images, photos, materials, words, colour inspiration (it might be photos of foods or flowers as a source of colour inspiration, or scenes such as a beach scene to capture perhaps a teal colour scheme) or anything else that inspires the design.

A SCULPTURE OR PIECE OF ART:

- What piece of art are you considering?
 - ☐ Sculpture
 - ☐ Painting
 - ☐ Painting a piece of furniture
 - ☐ Drawing
 - ☐ Mural
 - ☐ Mosaic
 - ☐ Photography
 - ☐ Installation
 - ☐ Production of craft (woodwork, glassware, metalwork, furniture)
 - ☐ Other _____



- What subject matter will be featured (are there any special images or symbols which the character values)?
- What colours and materials will be used (consider the colours the character is attracted to and the mood that is trying to be captured in the piece or evoked by the creation)?





VISUAL-SPATIAL

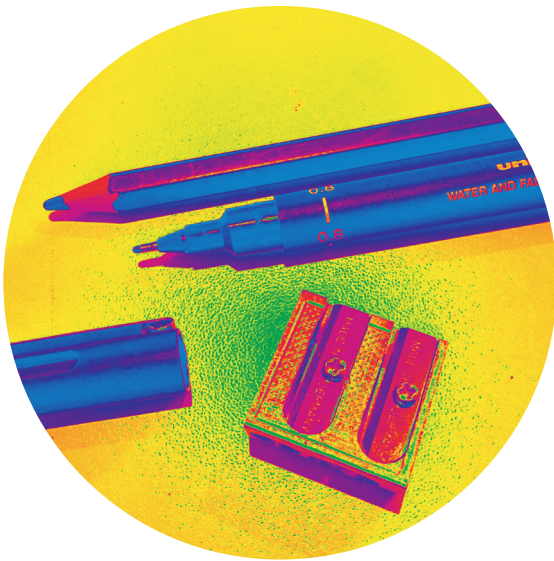


The Red Hat
related to feelings
and intuition



DESIGNERS WANTED

SKETCH your designs



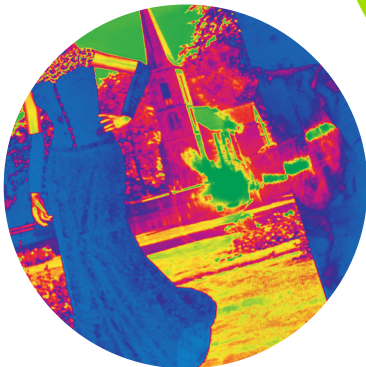
There are endless possibilities when it comes to presenting this task. The choice is yours! Some possible options could include:



CREATE them

Have fun bringing two of the following to life for a character: a jewellery piece, accessory, a clothing item, a sculpture or piece of art.

Consider what materials you are going to use to do this – recycled materials, craft supplies (pom poms, pipe cleaners, buttons etc) different fabrics, lace, natural products – wood to name a few. (With clothing you might choose to sew a mini version)



**Use an APP
to make the
pieces**



**Create a
COLLAGE
featuring
the pieces**

You might choose to do this with paper, pen or art materials; or you might prefer to use an app, a software program or a web based program.

Remember to include a written piece explaining the name of the piece, your choices behind the design and what the creation reflects about the character for each bespoke creation.